

Trietex recessed curtain[®] track

SOLUTIONS TO RECESS TRIETEX DRAPERY TRACKS



DESIGNED TO DISAPPEAR

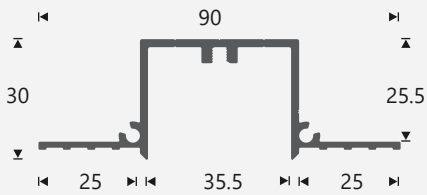


 **trietex[®]**
Antriebstechnik für die
Innenverschattung

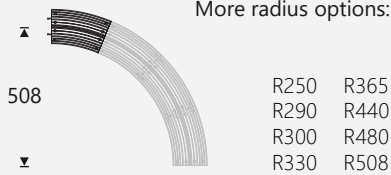
MEASUREMENTS

in mm

Track with Screw Channel (RCT TSC)



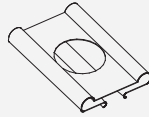
Curve Section



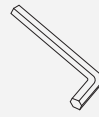
Track for Screw-Through Fixing (RCT TSTF)



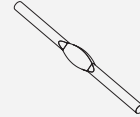
Accessories



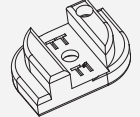
Track Protector



Allen Key

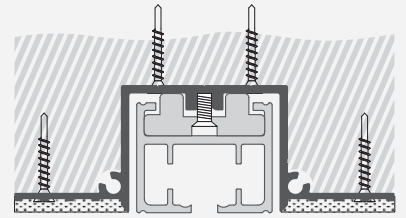


Splice Pin

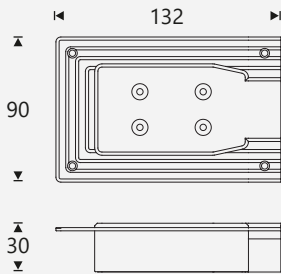


Fixing Bracket

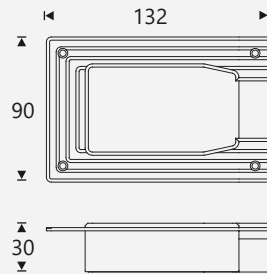
Fixing of Tracktrim (RCT TSC) & Curtain Track



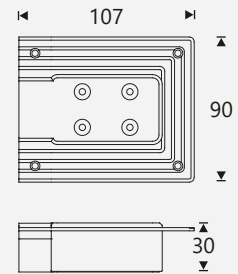
Motor End (Drive Side Cover)



Inverted Motor End (Drive Side Cover Inverted)



Return End (Idle End Cover)



Description

Solutions to recess manual and electric curtain tracks and end sets, with no visible bracketry.

Product Reference

Tracks: HTX Recess Track
End-sets: HTX RCT DSC, IDSC, IEC
Fixing Bracket: HTX RCT FXB
Curve sections: HTX RCT CVT

Fixing

Anchoring with countersink screws through profile and flanges every 200mm. Finished plaster level flush with chamfered edge and ceiling.

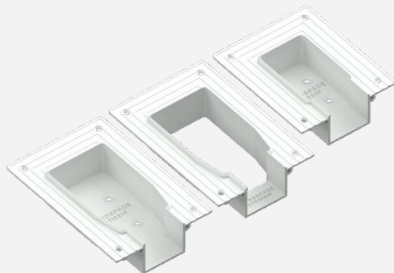
Material

Tracks in Aluminium, EN 6060 T66
End-sets & curves in Plastic POM Polymer

Finish

White to be plastered in and decorated at site to match ceiling.

FEATURES



Centered curtain tracks with no visible fixing brackets

In contrast to solutions using a wedge along the side of the curtain track, Recess Track is fixed through the curtain track for minimum visual impact.

Perfect-fit end-set to match motor and return ends

End sets are designed and manufactured to perfectly fit with motor and belt return ends.

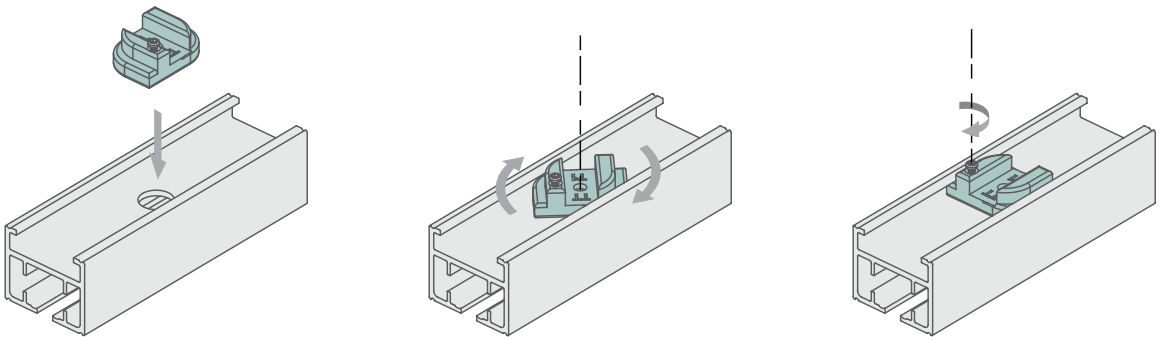
Seamless appearance after painting

Plaster is feathered over skim coat flanges to hide the track and end-set, leaving only an open cavity for installation of curtain system.

Splice Pins to connect different profiles

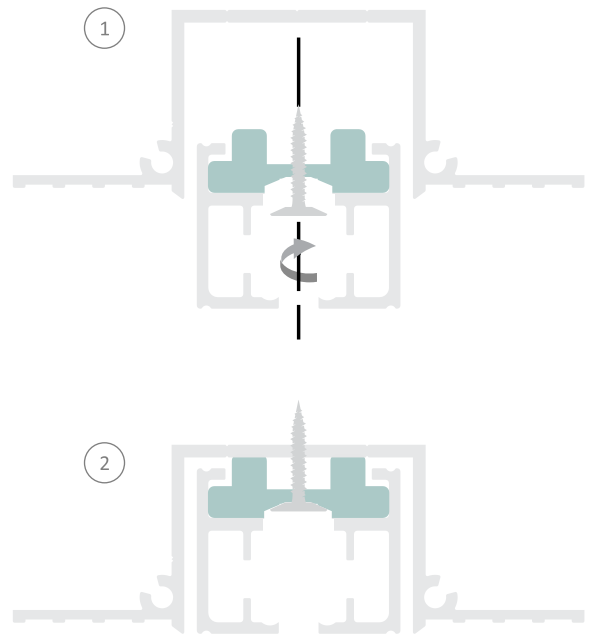
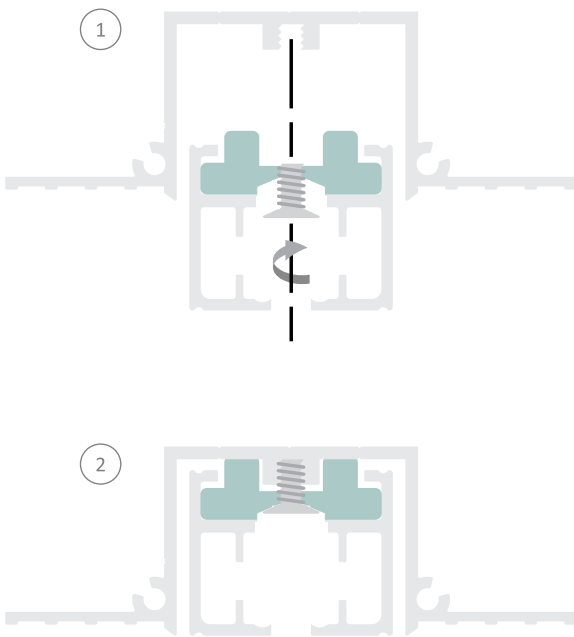
Splice Pins are used to connect the endsets to the main Tracktrim profile and also to the different curved sections.

Attaching Fixing Bracket



Fixing to RCT TSC

Fixing to RCT TSTF, Optional Fixing to RCT TSC



Connecting Sections using Splice Pins

